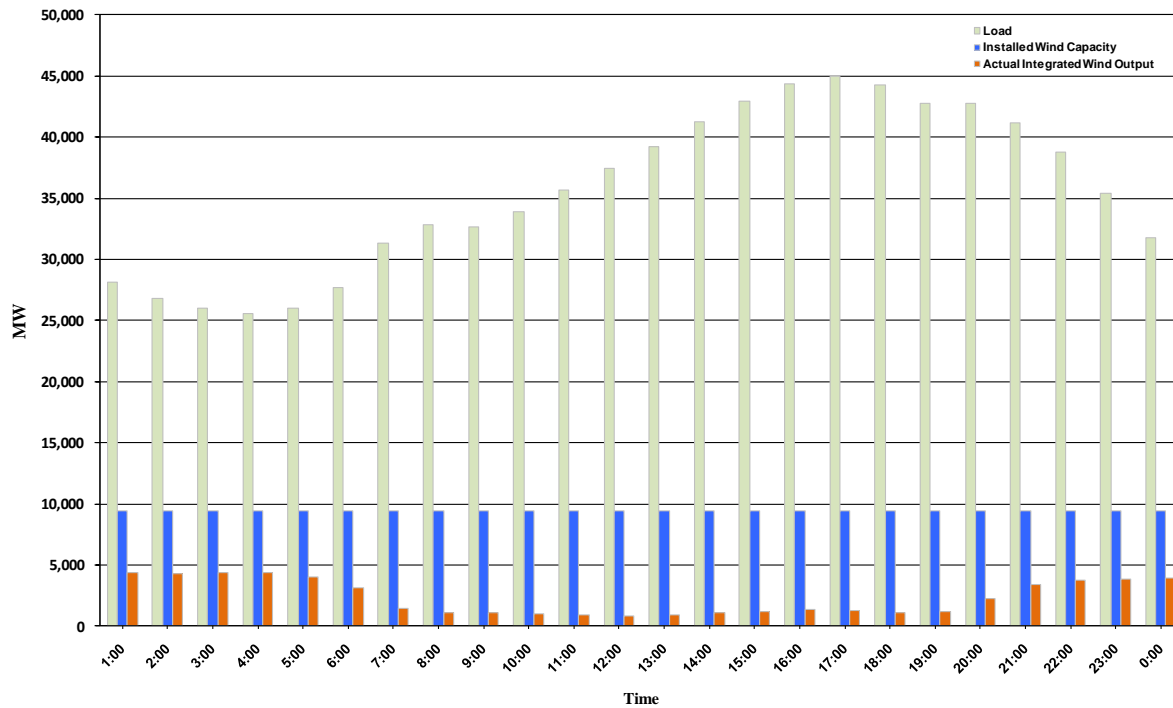




ERCOT Grid Operations Wind Integration Report: 10/27/10

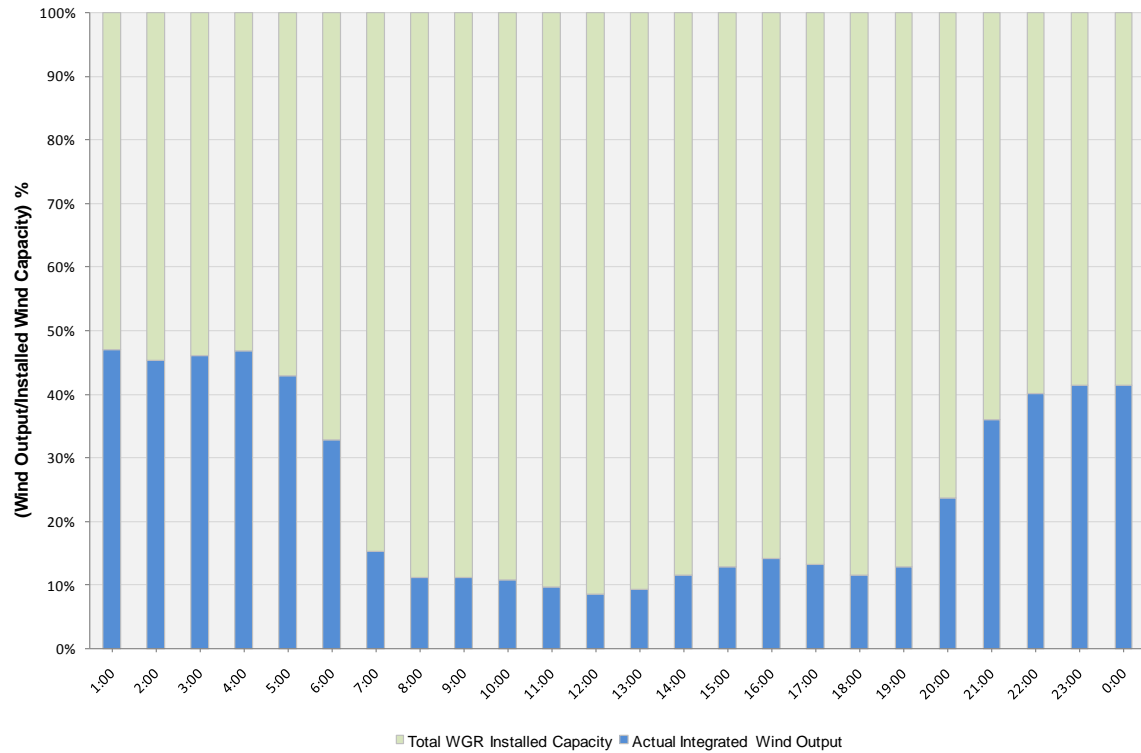
Peak Load	44,961 MW
Load Peak Hour	17
Wind Record 06/12/10	7016 MW
Max Wind value	4646 MW
Wind Peak Hour	00:37:52
Wind Integration %	16.65

Hourly Average Actual Load vs. Actual Wind Output
10-27-2010

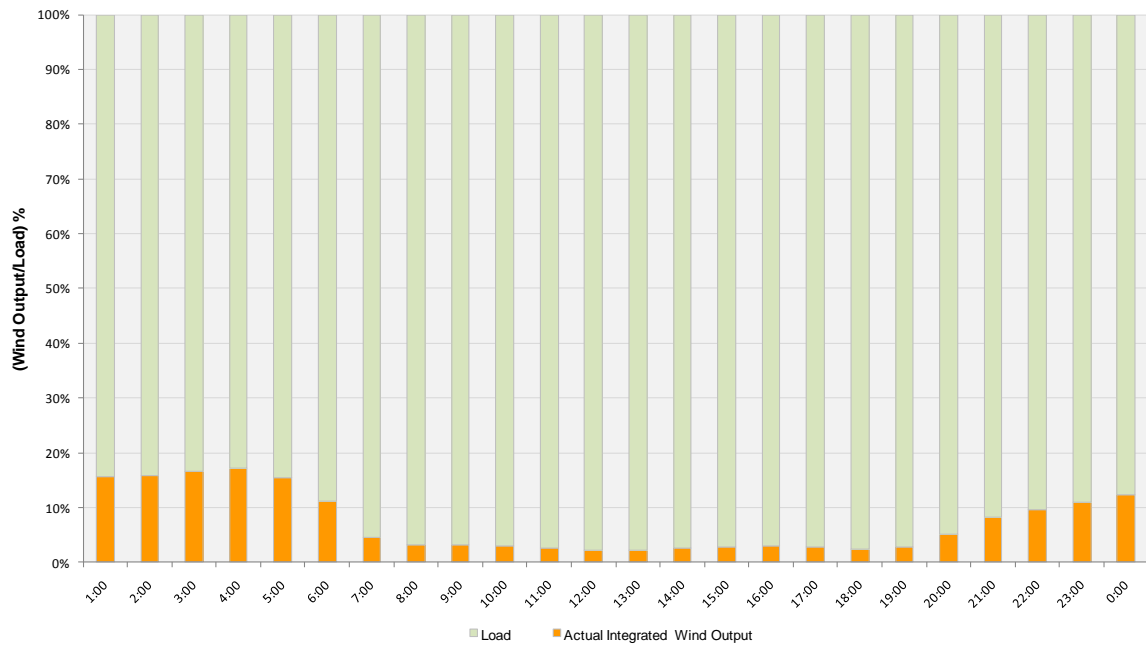




Actual Wind Output as a Percentage of the Total Installed Wind Capacity
10-27-2010



Actual Wind Output as a Percentage of the ERCOT Load
10-27-2010





ERCOT Load vs. Actual Wind Output 10/20/10 - 10/27/10

